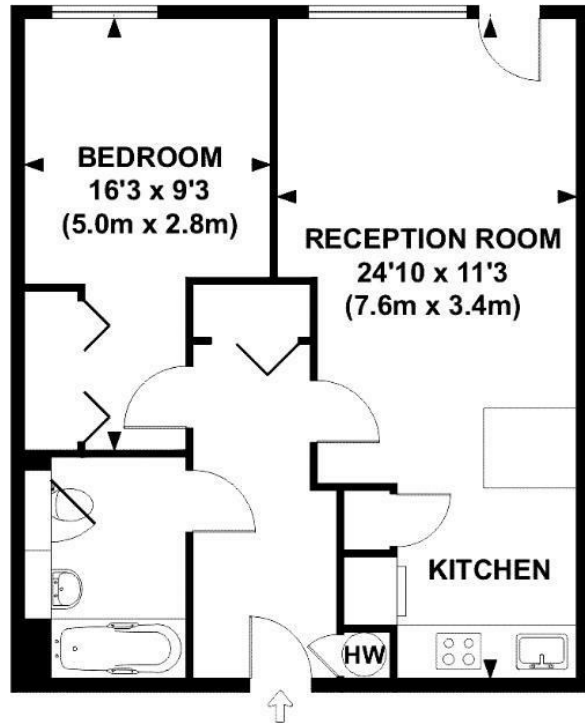




Grosvenor 5 Gatliff Road, London, London SW1W 8BD

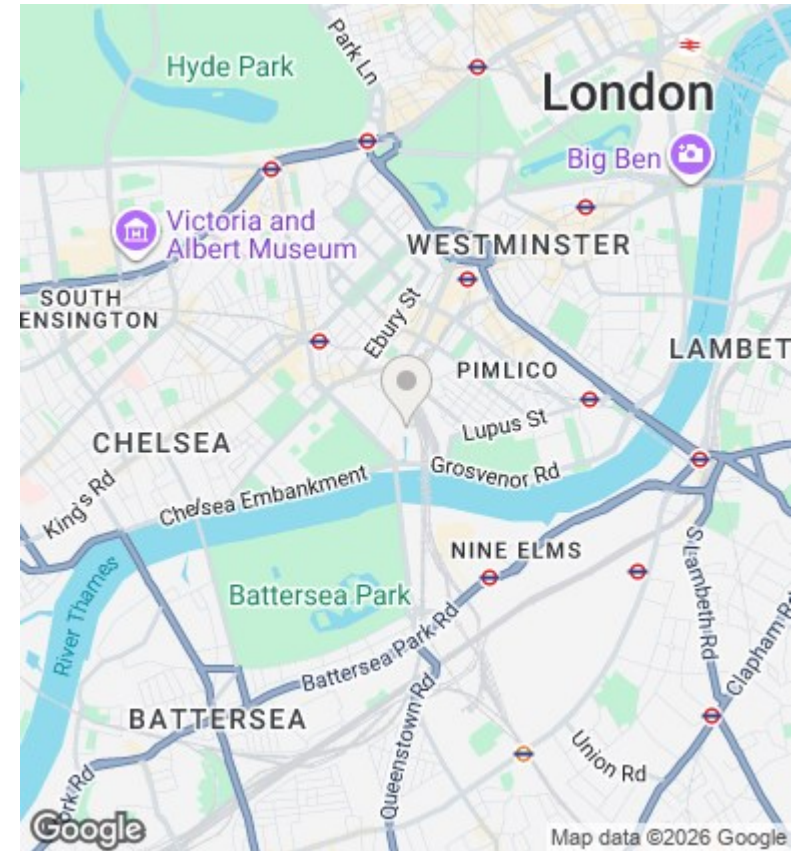
£2,999 Per Month

- Excellent location close to Sloane Square and Victoria
- Onsite Cafe
- 24-hour concierge
- Onsite Sainsburys
- Gym / Spa
- Riverside development



THIRD FLOOR

APPROX. GROSS INTERNAL FLOOR AREA 540 SQ FT / 50 SQ M



Viewings

Viewings by arrangement only.
Call 02077225022 to make an appointment.

Council Tax Band

G

EPC Rating:

B

Energy Efficiency Rating		Current	Potential
<i>Very energy efficient - lower running costs</i>			
(92 plus)	A		
(81-91)	B	82	
(69-80)	C		
(55-68)	D		
(39-54)	E		
(21-38)	F		
(1-20)	G		
<i>Not energy efficient - higher running costs</i>			
England & Wales		EU Directive 2002/91/EC	